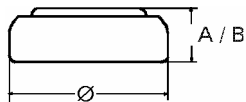


Data Sheet

Type Number 339
Designation IEC ---
System Silver oxide / Zinc / Alkaline - Electrolyte



Nominal Voltage 1,55 V
Typical Capacity C 11 mAh
 Load 100 kOhm, at 20 °C down to 1.2 V

Weight (approx.) 0,21 g
Volume 0,04 ccm
Coding..... Date of Manufacturing Month/Year

Temperature Ranges

	min	max.
Storage	0 °C	55 °C
Discharge	0 °C	55 °C

Dimensions

	min	max.
Diameter (Ø).....	6,65	6,8
Height (A/B)	1,3	1,45

Segment Watch

Main Applications Watch
 Photo
 Electronic

Typical Capacities (at 20 °C)

Discharge Type	Load	End Voltage:	1.2 V
Continuous 24h/d,7d/w Current [µA]:	100000 Ω 15,6	Time:	700 h
		Capacity [mAh]:	11
		Energy [mWh]:	17