

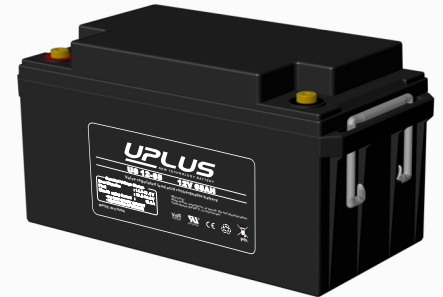


US Series-General Purpose

US 12-65(12V65Ah)

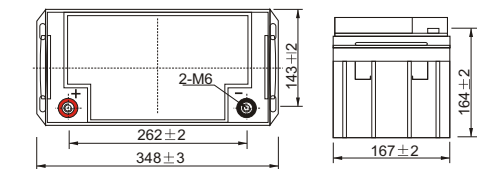
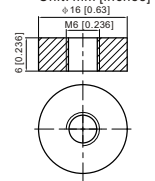
Specifications

Rated Voltage	12V	
Nominal Capacity	65.0Ah	(C ₂₀ , 1.80V/cell)
Dimension	Length	348±3mm (13.7 inches)
	Width	167±2mm (6.57 inches)
	Container Height	178±2mm (7.01 inches)
	Total Height	178±2mm (7.01 inches)
Approx Weight	21.3 Kg (46.97 lbs)	
Terminal	T6	
Container Material	ABS	
Rated Capacity (25°C)	65.0 Ah	(20hr, 3.25A, 1.80V/cell)
	61.8 Ah	(10hr, 6.18A, 1.80V/cell)
	53.0Ah	(5hr, 10.6A, 1.75V/cell)
	48.3 Ah	(3hr, 16.1A, 1.75V/cell)
	37.7 Ah	(1hr, 37.7A, 1.60V/cell)
Max. Discharge Current	780A (5s)	
Internal Resistance (25°C)	Approx 7.3mΩ	
Operating Temp. Range	Discharge	-15 ~ 50°C (5 ~ 122°F)
	Charge	0 ~ 40°C (32 ~ 104°F)
	Storage	-15 ~ 40°C (5 ~ 104°F)
Nominal Operating Temp. Range	25±3°C (77±5°F)	
Cycle Use	Initial Charging Current less than 19.5A. Voltage 14.4V~15.0V at 25°C(77°F)Temp. Coefficient -30mV/°C	
	Initial Charging Current less than 19.5A. Voltage 13.5V~13.8V at 25°C(77°F)Temp. Coefficient -20mV/°C	
Effect of temp. to Capacity	40°C (104°F)	103%
	25°C (77°F)	100%
	0°C (32°F)	86%
Self Discharge	US series batteries may be stored for up to 6 months at 25°C(77°F) and then a freshening charge is required.	
	For higher temperatures the time interval will be shorter.	



Layout

T6 Terminal



Constant Current Discharge (Amperes) at 25 °C (77°F)

F.V/Time	5min	10min	15min	20min	30min	45min	1h	2h	3h	4h	5h	6h	8h	10h	20h
1.85V/cell	105.8	83.2	70.7	59.1	47.0	35.6	29.1	18.6	14.7	12.0	9.66	8.41	6.83	5.83	3.22
1.80V/cell	142.0	106.3	85.4	69.9	55.5	41.4	32.6	20.3	15.8	12.8	10.4	9.02	7.24	6.18	3.25
1.75V/cell	160.1	116.8	93.3	75.2	57.6	42.9	34.1	21.0	16.1	13.1	10.6	9.27	7.37	6.24	3.28
1.70V/cell	176.3	127.3	99.6	79.0	59.9	44.7	35.2	21.8	16.5	13.4	10.9	9.46	7.47	6.30	3.35
1.65V/cell	194.4	137.3	105.9	84.0	63.2	45.8	36.4	22.5	17.2	13.9	11.2	9.67	7.59	6.43	3.39
1.60V/cell	214.4	149.1	113.3	89.5	66.8	47.7	37.7	23.2	17.8	14.3	11.6	9.88	7.66	6.50	3.41

Constant Power Discharge (Watts/cell) at 25 °C (77°F)

F.V/Time	5min	10min	15min	20min	30min	45min	1h	2h	3h	4h	5h	6h	8h	10h	20h
1.85V/cell	193.4	153.6	132.0	111.5	89.6	68.4	56.2	36.0	28.6	23.4	18.9	16.5	13.5	11.6	6.39
1.80V/cell	256.8	194.0	157.3	129.9	104.1	78.9	62.6	39.1	30.6	24.9	20.2	17.7	14.3	12.2	6.44
1.75V/cell	283.4	209.7	169.7	138.4	107.2	81.1	65.2	40.4	31.0	25.4	20.7	18.1	14.5	12.3	6.49
1.70V/cell	303.4	223.4	178.7	144.3	110.9	84.0	67.0	41.9	31.9	26.0	21.2	18.4	14.7	12.4	6.61
1.65V/cell	329.9	238.9	188.5	152.2	116.1	85.4	68.8	42.8	33.1	26.8	21.7	18.8	14.9	12.7	6.69
1.60V/cell	355.4	253.4	198.3	160.3	121.7	88.5	70.9	44.0	33.9	27.5	22.3	19.1	15.0	12.8	6.71



US Series-General Purpose

US 12-65(12V65Ah)

Applications

- All purpose
- Uninterruptable Power Supply (UPS)
- Electric Power System (EPS)
- Emergency backup power supply
- Alarm and security system
- Communication power supply
- DC power supply
- Auto control system

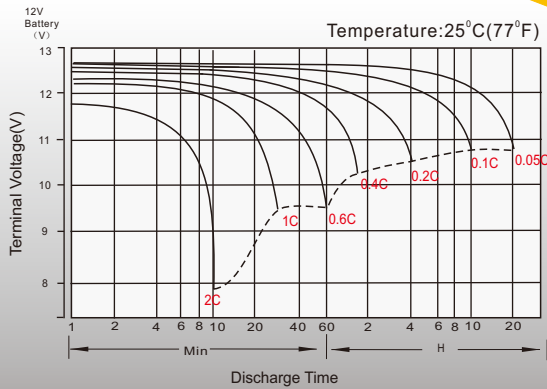
General Features

- 10 years design life(25°C)
- Special exhaust structure and sealing technology, safe and reliable, flexible installation, convenient maintenance
- PbCaSn alloy for plate grids: less gassing, less self-discharging
- High quality AGM separator: extend cycle life and prevent micro short circuit
- High purity raw material: ensure low self discharge rate

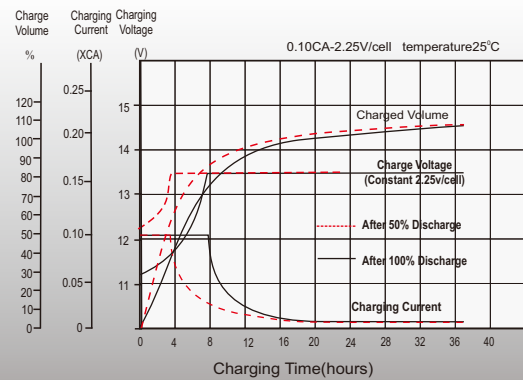
Standards

- Compliance with IEC 60896 standards, EU Battery Directive
- UL, CE Certified
- Manufactured in Leoch®IATF 16949, ISO45001, ISO 9001 and ISO 14001 certified production facilities

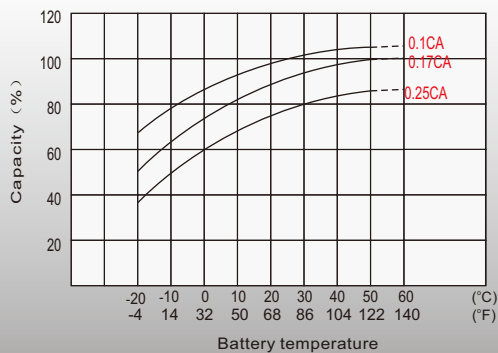
Discharge Characteristics



Float Charging Characteristics



Temperature Effects in Relation to Battery Capacity



Float Service Life

