



# SSB SBL 50-12HR (12V 1127W)

## Specification

Nominal Voltage	12V	
Nominal Power (Watt / 20°C / 10.0 V/Battery)	5 min	1413,6 W / 12V-Battery
	10 min	1127 W / 12V-Battery
	15 min	909,9 W / 12V-Battery
Nominal Power (Watt / 20°C / 1.67 V/C)	5 min	235 W / 1.67 V/C
	10 min	187,83 W / 1.67 V/C
	15 min	151,5 W / 1.67 V/C
Nominal Capacity (10hr / 20°C / 10.0 V/Battery)	39,9 Ah	
Internal Resistance	Fully Charged battery 68°F(20°C)	≤7.5 mOhms
Self-Discharge	3% of capacity declined per month at 20°C (average)	
	SSB series batteries may be stored for up to 6 months at 68°F(20°C) and then a freshening charge is required. For higher temperatures the time interval will be shorter.	
Dimension	Length (mm / inch)	198 / 7.80
	Width (mm / inch)	166 / 6.54
	Height (mm / inch)	169 / 6.65
	Total Height (mm / inch)	169 / 6.65
Approx. Weight (Kg / lbs)	13.0 / 28.7	
Operating Temperature Range (temporarily – see our manual)	Discharge	-20~60°C
	Charge	-0~50°C
	Storage	-20~60°C
Max. Discharge Current 68°F(20°C)	400A(5s)	
Short Circuit Current	1100A	
Charge Methods: Constant Voltage Charge 68°F(20°C)	Cycle use	2.30-2.35VPC
	Maximum charging current	12 A
	Temperature compensation	-3mV/°C
	Standby use	2.23-2.275VPC
	Temperature compensation	-4mV/°C
Life expectancy	10~12 years at 20°C with charge voltage 2.25V/cell	

\*All specifications are approximate values



## Applications

- ◆ Absorbent Glass Mat (AGM) technology for efficient gas recombination of up to 99% and freedom from electrolyte maintenance or water adding.
- ◆ Not restricted for air transport-complies with IATA/ICAO Special Provision A67.
- ◆ UL-recognized component.
- ◆ Can be mounted in any orientation.
- ◆ Computer designed lead, calcium tin alloy grid for high power density.
- ◆ Long service life, float or cyclic applications.
- ◆ Maintenance-free operation.
- ◆ Low self discharge.
- ◆ Case and cover available in both standard and flame retardant ABS.



Conform to:  
IEC60896-21&22 and/or IEC61427

## Discharge Constant Current (Amperes at 68°F20°C)

F.V/Time	5min	8min	10min	15min	20min	30min	60min	90min	2h	3h	4h	5h	8h	10h	20h
9.60V	141,40	121,09	108,91	86,51	69,50	50,94	29,29	21,69	14,094	10,349	8,406	7,096	4,741	4,032	2,068
10.0V	130,84	113,59	102,19	82,01	64,83	48,56	27,91	20,65	13,888	10,212	8,302	7,014	4,694	3,994	2,052
10.2V	125,40	109,59	98,49	79,48	62,35	47,19	27,11	20,03	13,613	10,028	8,163	6,905	4,630	3,943	2,029
10.5V	118,44	104,11	92,48	75,75	60,65	45,86	26,66	19,58	13,250	9,785	7,978	6,760	4,545	3,875	2,000
10.8V	111,40	98,63	86,44	71,96	58,85	44,45	26,14	19,11	12,773	9,465	7,735	6,568	4,433	3,785	1,961
11.1V	103,96	92,74	80,14	67,86	56,80	42,81	25,51	18,53	12,153	9,047	7,416	6,317	4,284	3,666	1,909

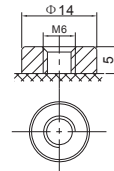
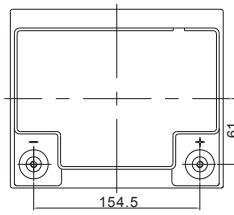
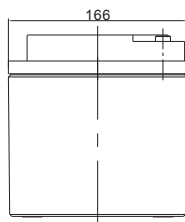
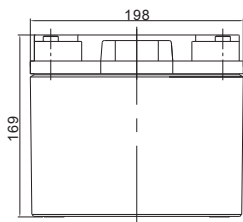
## Discharge Constant Current (Watts at 68°F20°C)

F.V/Time	5min	8min	10min	15min	20min	30min	60min	90min	2h	3h	4h	5h	8h	10h	20h
9.60V	1513,1	1314,7	1189,6	950,6	766,4	563,0	325,0	241,6	162,68	120,38	98,28	83,30	56,39	48,27	24,80
10.0V	1413,6	1245,2	1127,0	909,9	721,9	542,0	312,7	232,3	161,47	119,51	97,57	82,76	56,00	47,91	24,65
10.2V	1371,0	1215,8	1099,1	892,3	702,5	532,8	307,3	227,9	158,77	117,66	96,15	81,64	55,31	47,33	24,40
10.5V	1311,2	1169,8	1045,1	861,2	692,0	524,3	306,1	225,7	155,25	115,29	94,34	80,20	54,40	46,57	24,08
10.8V	1251,0	1124,1	991,1	829,9	681,2	515,6	304,4	223,4	150,42	111,96	91,79	78,20	53,18	45,54	23,63
11.1V	1191,2	1078,5	937,3	798,6	670,8	506,7	303,2	221,1	143,88	107,50	88,34	75,46	51,52	44,18	23,04



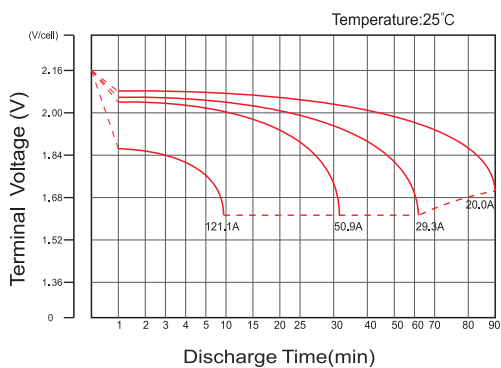
Updated: 24.10.2019

# Dimensions

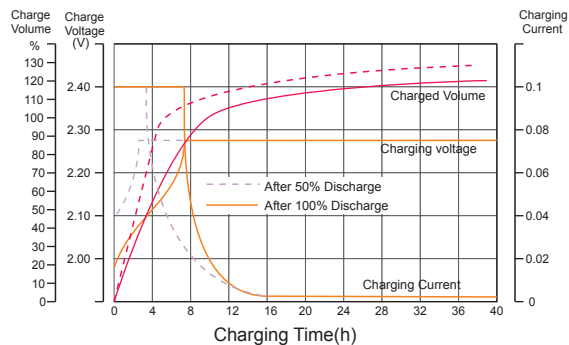


F11 TERMINAL

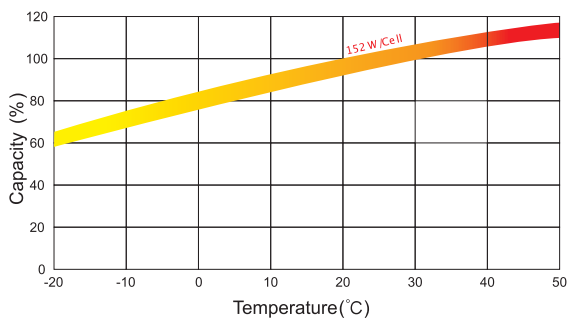
## Discharge Characteristics



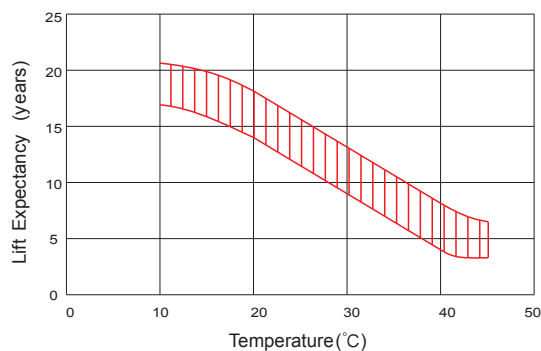
## Float Charging Characteristics



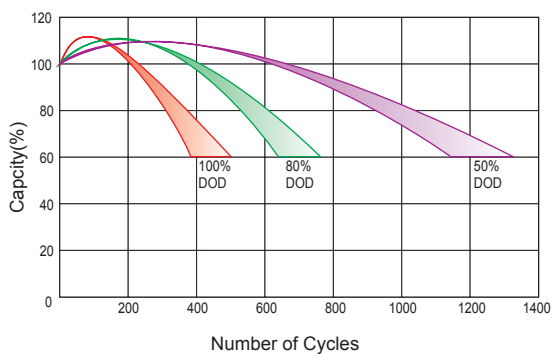
## Temperature Effects in Relation to Battery Capacity



## Effect of Temperature on Long Term Float Life



## Cycle Life in Relation to Depth of Discharge



## Self Discharge Characteristics

